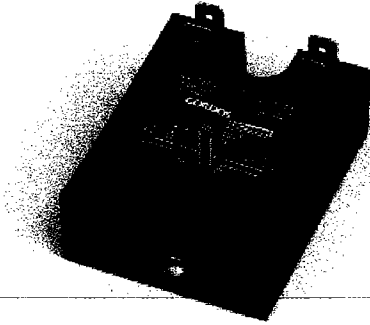
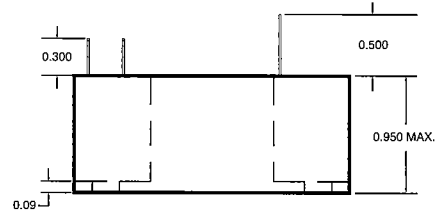
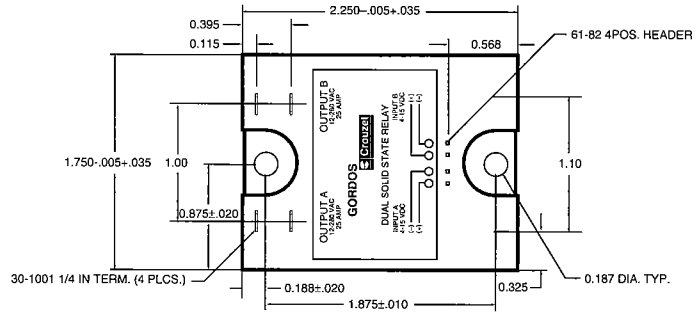


SOLID STATE RELAYS

25 AMP DUAL OUTPUT POWER RELAY



- 25 amp output.
- Back-to-back dual SCR output.
- Zero AC or random turn-on models.
- 4 kV optical isolation.

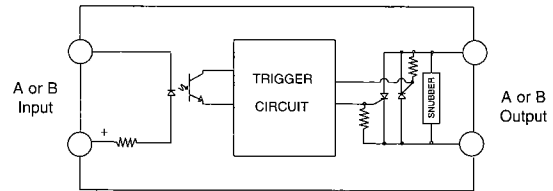


INPUT SPECIFICATIONS: (1)

Parameter	GD240D25	GD240D25R
Control Voltage	4-15 VDC	4-15 VDC
Drop Out Voltage	1 VDC	1 VDC
Maximum Input Current (1)	27 mA Max	27 mA Max
Nominal Input Resistance (2)	700Ω	700Ω
Turn-On Time	8.33 ms	0.1 ms
Turn-Off Time	8.33 ms	8.33 ms

OUTPUT SPECIFICATIONS:

Parameter	GD240D25	GD240D25R	Units
Line Voltage	24-280		Vrms
Peak Off-state Voltage (3)	600		Vpeak
Maximum Off-state Leakage (4)	15		mArms
Static Off-state dv/dt (5)	200		V/μs
Minimum On-state Current	100		mA
Maximum On-state Current (6)	25		Arms
Maximum 1-Cycle Surge (7)	250		Apeak
Maximum 1-Second Surge (7)	67		Apeak
Peak On-state Voltage Drop (8)	1.6		Vpeak
Rjb	1.5		°C/W
I ² t (60 Hz, Half Cycle)	260		A ² sec

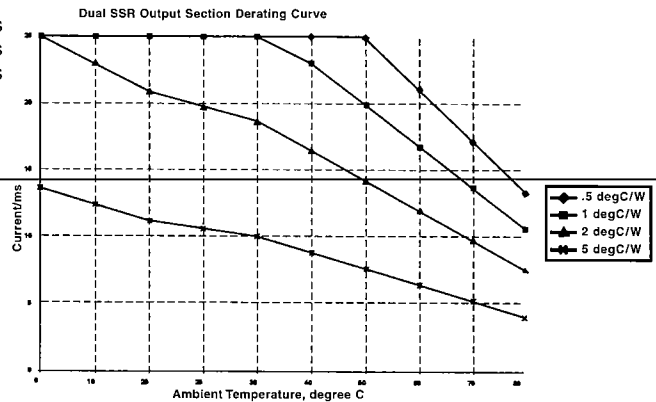


GENERAL SPECIFICATIONS:

Parameter	All Devices	Units
Operating Temperature Range (9)	-20 to +80	°C
Storage Temperature Range	-40 to +100	°C
Input to Output Isolation Voltage (10)	4000	VRms
Input/Output to Ground Isolation Voltage (10)	2500	VRms
Isolation Section to Section (10)	2500	VRms
Capacitance Input to Output (Typical)	5	pF
Line Frequency Range	47 to 63	Hz

Notes:

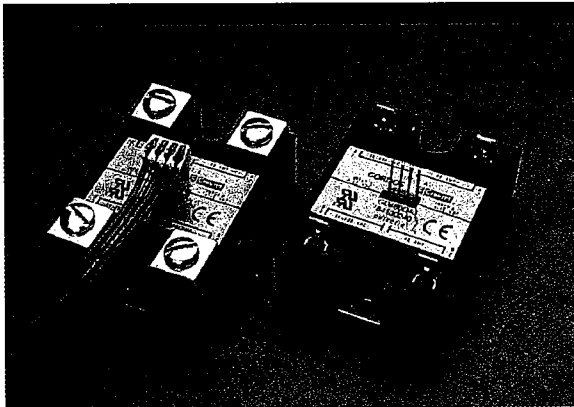
- (1) At 15 VDC.
- (2) Ta = 25°C
- (3) Do not apply continuously for over 1 minute.
- (4) At Max rated line voltage, Ta = 25°C.
- (5) Minimum dv/dt per EIA/NARM RS443, method RS397, 25°C.
- (6) Mounted on 1°C/W heat sink in still air, Ta = 40°C.
- (7) Non-repetitive 60 Hz, resistive load, Ta = 25°C.
- (8) At max rated current.
- (9) Derate at .356 A/°C from 40 to 80°C.
- (10) Limited to 1 mA for 1 second Ta = 25°C.



Products and specifications subject to change without notice.
Consult factory for application assistance.

SOLID STATE RELAYS

40 Amp DUAL OUTPUT POWER RELAY



FEATURES:

- Back-to-back dual SCR output.
- Zero AC or random turn-on models.
- 4 KV optical isolation.
- UL recognized (E79183).
- cUL (E79183).
- CE compliant.

1

INPUT SPECIFICATIONS: (1)

Parameter	84130230 84130240 84130250(QC) 84130260(QC)	84130231 84130241 84130251(QC) 84130261(QC)	Units
Control Voltage	4-15 VDC	4-15 VDC	
Drop Out Voltage	1 VDC	1 VDC	
Maximum Input Current (1)	50 mA Max	50 mA Max	
Nominal Input Resistance (2)	350 ohms	350 ohms	
Turn-On Time	8.33 ms	0.1 ms	
Turn-Off Time	8.33 ms	8.33 ms	
Type	Zero Crossing	Random Turn-on	

OUTPUT SPECIFICATIONS:

Parameter	84130230 84130231 84130250(QC) 84130251(QC)	84130240 84130241 84130260(QC) 84130261(QC)	Units
Line Voltage	24-280	36-530	Vrms
Peak Off-state Voltage (3)	600	1200	Vpeak
Maximum Off-state Leakage (4)	.1	.1	mArms
Static Off-state dv/dt (5)	500	500	V/μs
Minimum On-state Current	100	100	mA
Maximum On-state Current (6)	40	40	Arms
Maximum 1 -Cycle Surge (7)	500	500	Apeak
Maximum 1 -Second Surge (7)	145	145	Apeak
Peak On-state Voltage Drop (8)	1.6	1.6	Vpeak
R _{θj}	1.5	1.5	°C/W
t _{ft} (60Hz, Half Cycle)	1000	1000	A ² sec

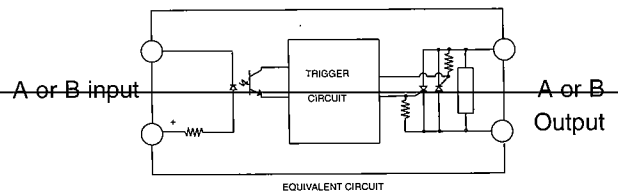
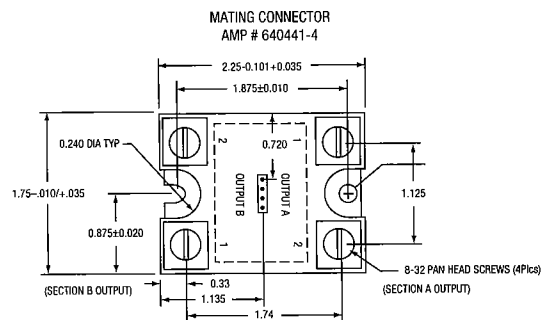
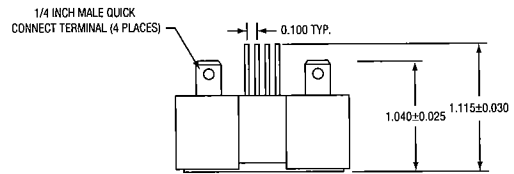
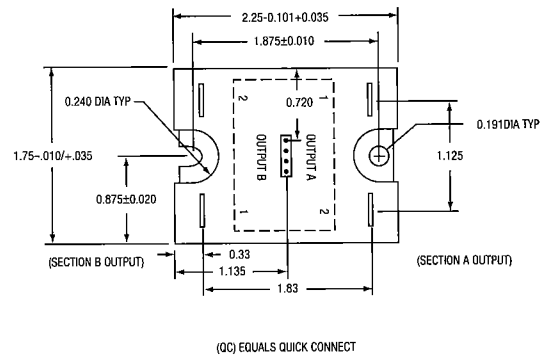
GENERAL SPECIFICATIONS:

Parameter	All Devices	Units
Operating Temperature Range (9)	-20 to +80	°C
Storage Temperature Range	40 to +100	°C
Input to Output Isolation Voltage (10)	4000	VRms
Input/Output to Ground Isolation Voltage (10)	2500	VRms
Isolation Section to Section (10) (11)	1500	VRms
Capacitance Input to Output (Typical)	5	pF
Line Frequency Range	47 to 63	Hz

Notes:

- (1) At 15 VDC.
- (2) T_a = 25°C
- (3) Do not apply continuously for over 1 minute.
- (4) At max rated line voltage, T_a = 25°C.
- (5) Minimum dv/dt per EIA/NARM RS443, method RS397, 25°C.

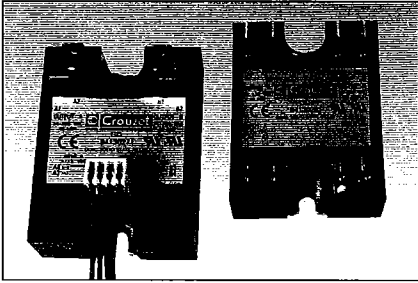
- (6) Mounted on 1°C/W heat sink in still air, T_a = 40°C.
- (7) Non-repetitive 60 Hz, resistive load, T_a
- (8) At max rated current.
- (9) Derate at .356 A/°C from 40 to 80°C.
- (10) Limited to 1 mA for 1 second T_a = 25°C.
- (11) Input A to Input B



Products and specifications subject to change without notice.
Consult factory for application assistance.

Dual Solid State Relays

- ▶ 40 amp dual AC output relays
- ▶ Output voltage from 24 to 530 Vac
- ▶ Direct bond copper substrate
- ▶ Back to back dual SCR output
- ▶ 4000 Vac optical isolation
- ▶ Zero crossing or random turn on
- ▶ UL/cUL Recognized, CE Compliant



Output Specifications

Voltage range (Vrms)	24 - 280Vac	48 - 660Vac
Peak Voltage (Vpk, t = 1 min.)	600	1200
Off-state leakage *	5mA rms	5mA rms
(@ max. line voltage & Ta = 25°C)		
Output Current (Mounted on proper heat sink, see deratings)	40	40
Minimum Current (mA rms)	100	100
Max. 1 cycle surge current (A pk, Ta = 25°C)	500	500
Max. 1 second surge current (A pk, Ta = 25°C)	125	125
Forward voltage drop (Vpk @ Imax, Ta = 25°C)	1.6	1.6
fT (60Hz, 1/2 cycle)	1000	1000
Rjθb (thermal res. Junction to baseplate, °C/W)	0.25	0.25
Static off-state dv/dt (V/μs, Ta = 25°C)	500	500

Input Specifications

	280V Models	530V Models
Input voltage	4-15Vdc	4-15Vdc
Drop out voltage	1Vdc	1Vdc
Nominal input current (@ 5Vdc)	10mA	15mA
Min. input current (for on-state)	9mA	13mA
Input Resistance	470 Ohms	300
Turn-on time*	8.33msec	8.33msec
Turn-off time	8.33msec	8.33msec

*Random SSR's turn on in less than 100μs

General Characteristics

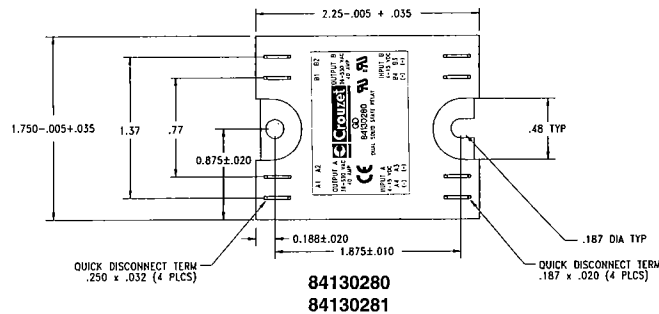
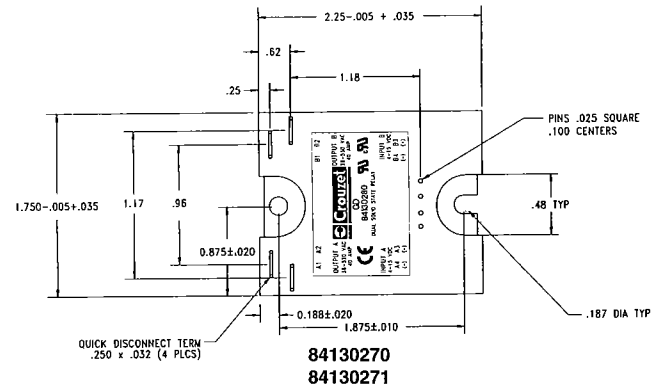
Operating Temperature (°C)	-20 to +80
Storage Temperature (°C)	-40 to +100
Input to output isolation	4000Vrms
Input/output to ground isolation	2500Vrms
Input to output capacitance	8pF (typical)
Operating Frequency	47 to 63 Hz
Housing Material	UL 94V0 (self extinguishing)

Standards of Compliance

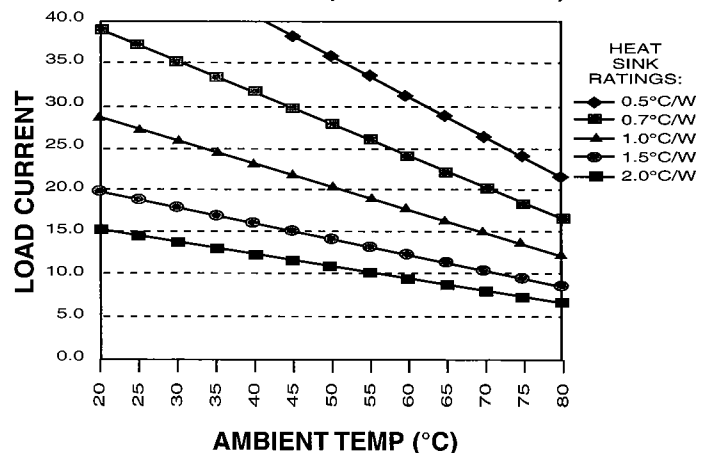
CE Compliant with the LVD 73/23/EEC
UL / cUL Recognized per UL 508 and CSA C22.2 no. 14-M91

Part Numbers

Zero Crossing Output			
Rating	Output	Input	Part Number
40 Amp	24-280Vac	4-15Vdc	84130270
	36-530Vac	4-15Vdc	84130280
Random Fire Output			
Rating	Output	Input	Part Number
40 Amp	24-280Vac	4-15Vdc	84130271
	36-530Vac	4-15Vdc	84130281



DERATE CURVES: DUAL 40 AMP SSR (Both Channels On)



Tel: 800-677-5311